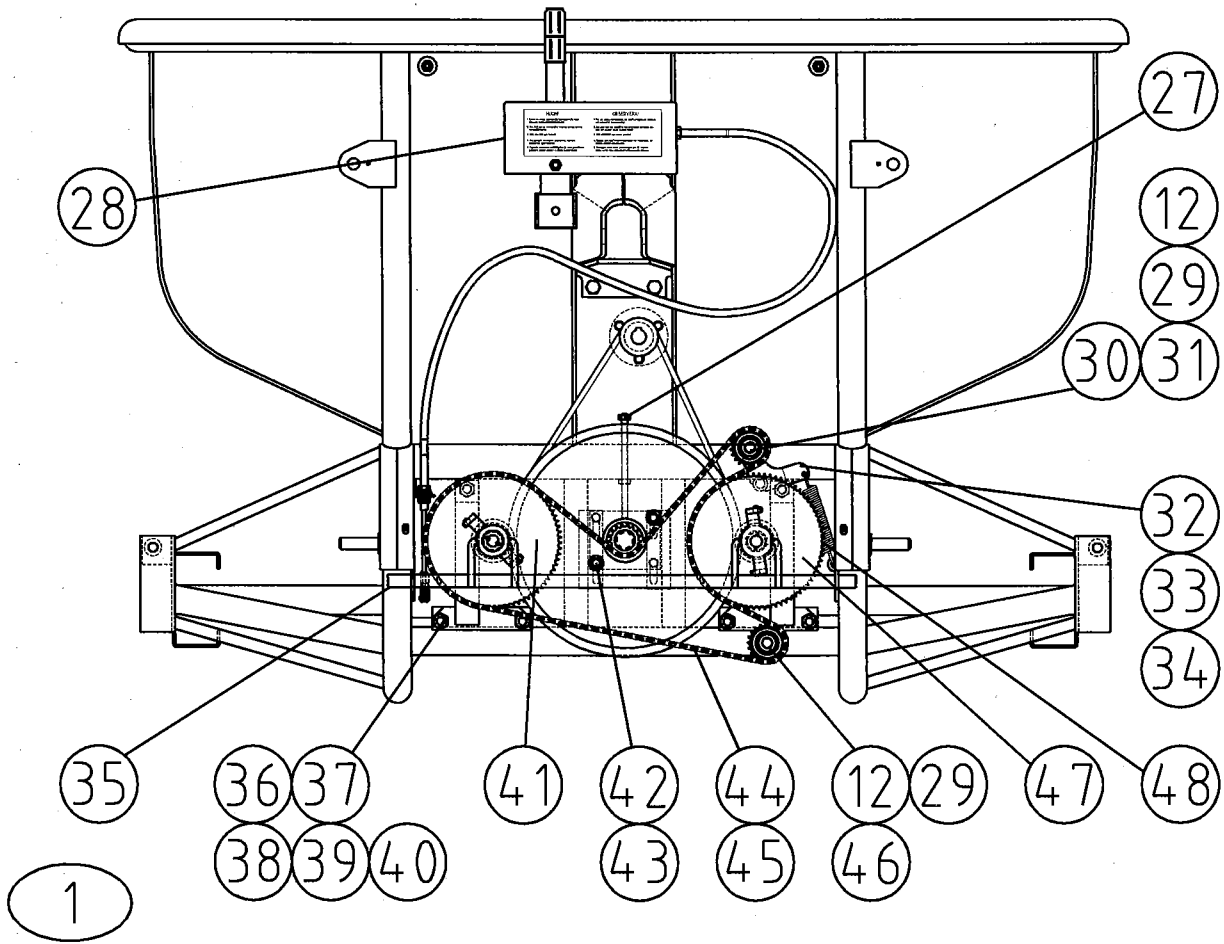
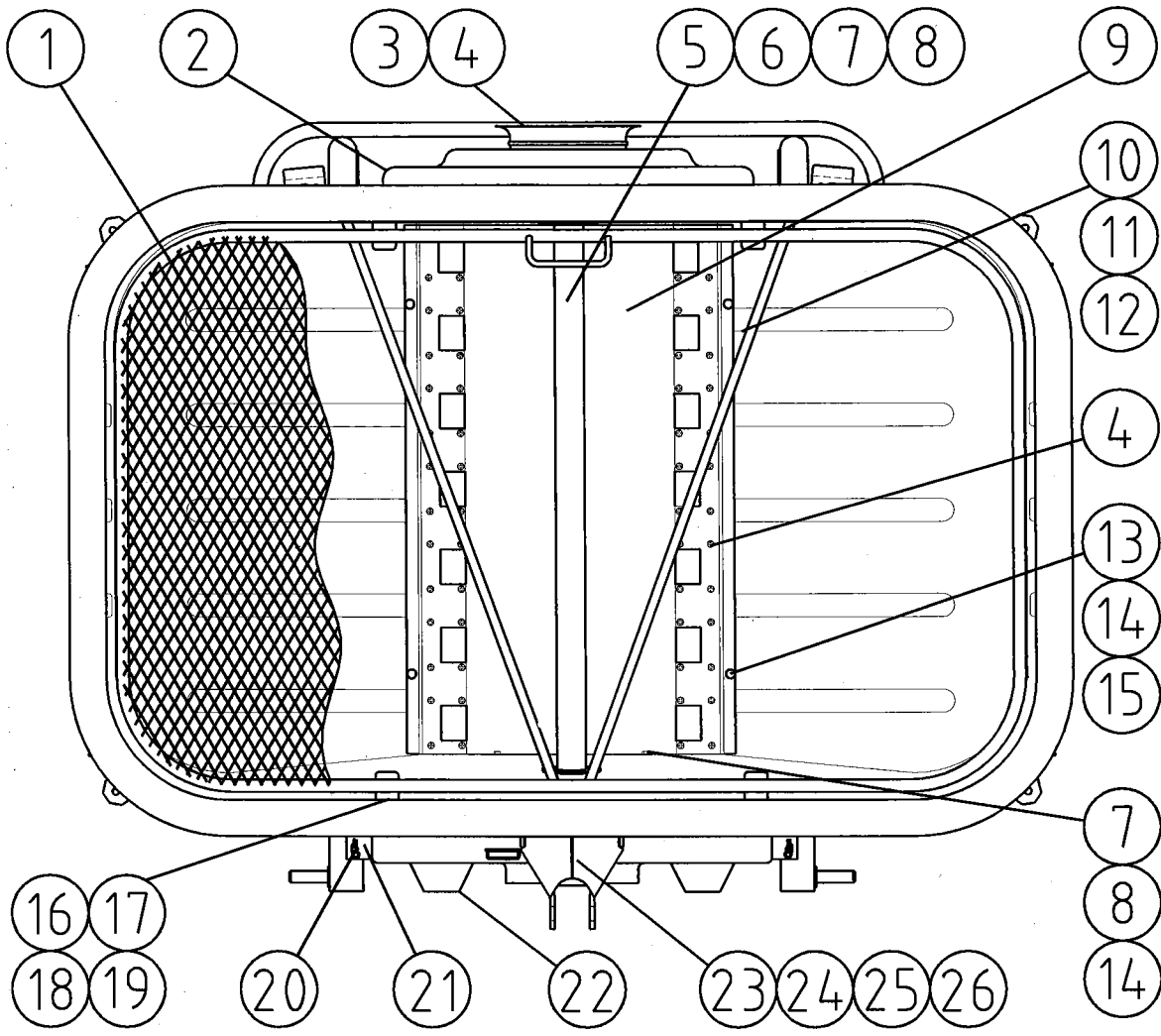


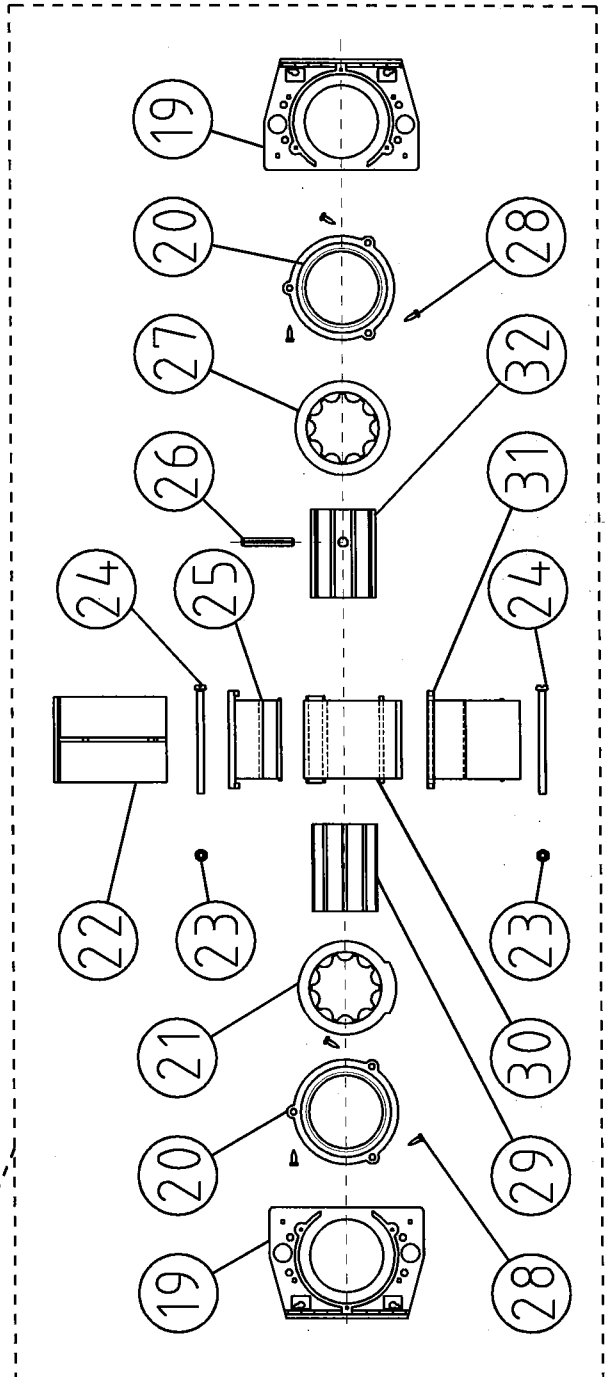
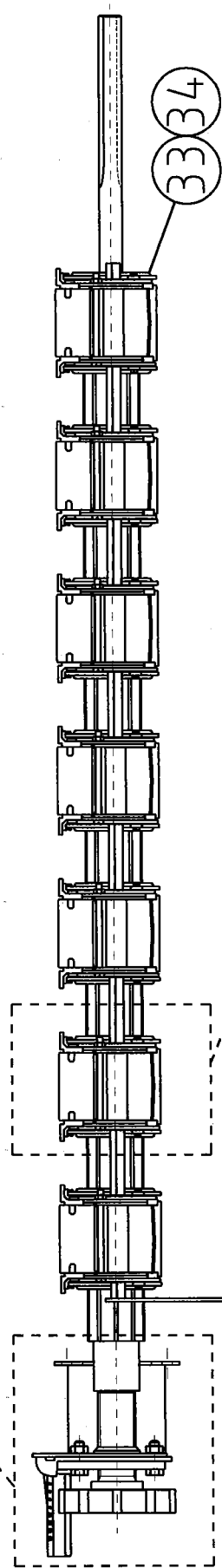
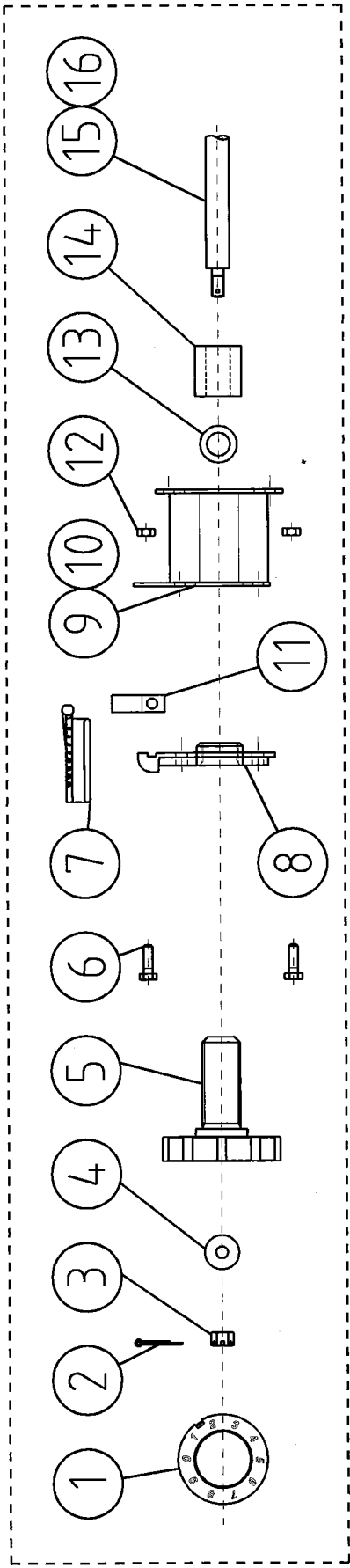
SPARE PART LIST

ELHO MATIC 1000

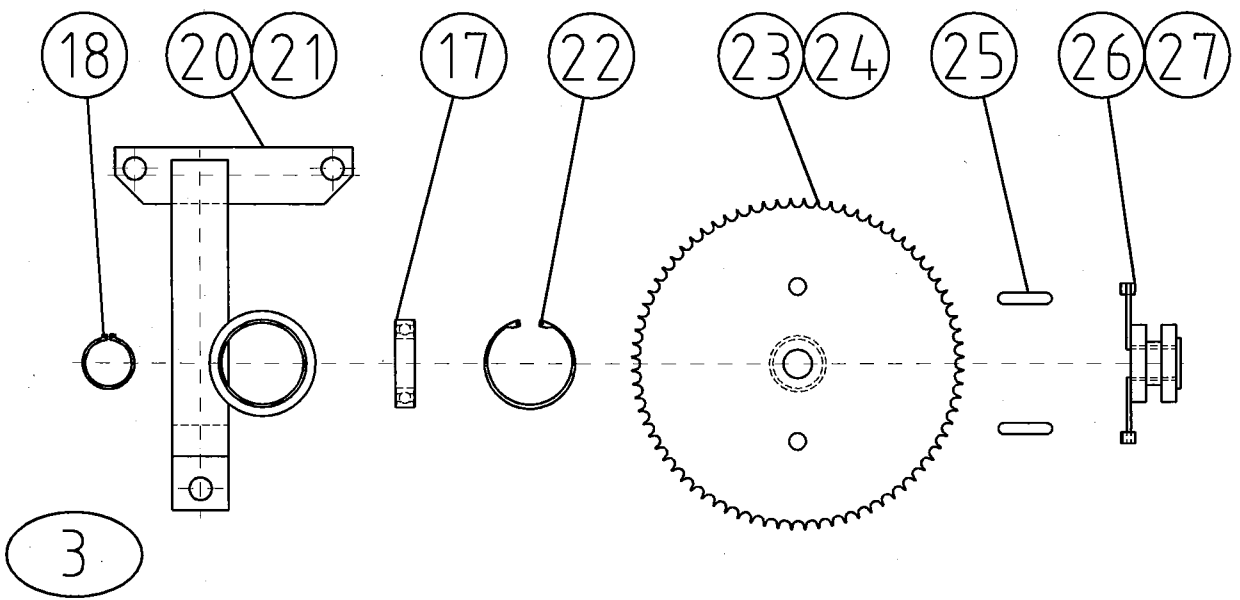
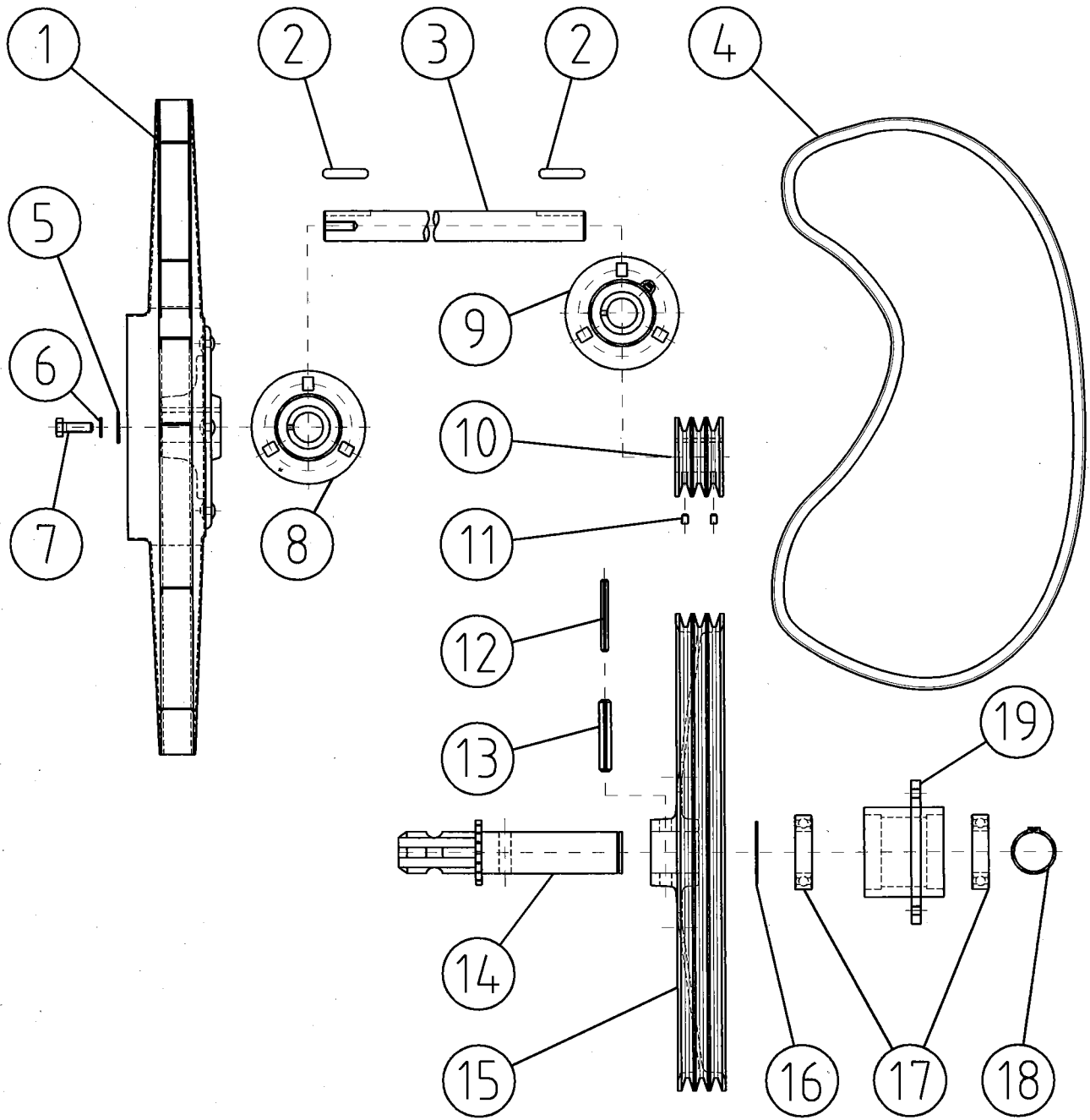


Item	Description	Part No	Pcs
1	Fertiliser grid	750210	1
2	Blower house	750200	1
3	Air inlet grid	750216	1
4	Screw 4,8x13	133070	59
5	Cower tube for blower axle	752270	1
6	Screw stainless DIN 603 M8x25	133105	6
7	Washer stainless M8	133030	10
8	Lock nut stainless M8	133025	10
9	Hopper bottom plate (stainless)	750013	1
10	Tension bar in hopper	750078	1
11	Washer DIN 125A M16/17	131810	2
12	Lock nut DIN 985 M16	131630	4
13	Screw stainless DIN 603 M6x16	133090	4
14	Lock nut stainless M6	133020	4
15	Washer stainless M6	133028	
16	Rubber damper ø 40	754630	4
17	Screw DIN 933 M8x40	130810	4
18	Washer DIN 9021 8/8,4	131910	2
19	Lock nut DIN 985 M8	131570	4
20	Pin	132920	2
21	Chain cover plate	750175	2
22	Chain cover	750170	1
23	Top link connection		1
24	Screw DIN 933 M14x50	131100	4
25	Lock nut DIN 985 M14	131620	4
26	Bracket for top link connection	750074	1
27	Tension screw	751300	1
28	Remote control (picture 4)		1
29	Tension sprocket 3/8x21	752400	2
30	Washer DIN 988 20/28x0,5	132240	
31	Screw DIN 931 M16x55	130520	1
32	Lever for tension sprocket	750590	1
33	Locking ring DIN 471 16x1	132058	1
34	Grease nipple	508016	1
35	Clutch axle	752260	1
36	Screw DIN 933 M10x70	130945	6
37	Washer DIN 125A M10/10,5	131770	12
38	Nut DIN 934 M10	131400	12
39	Lock nut DIN 985 M10	131580	12
40	Washer DIN 9021 10,5x30	131930	12
41	Sprocket right (picture 3)		1
42	Screw DIN 933 M8x25	130740	4
43	Washer DIN 125A M8/8,4	131750	4
43	Chain 3/8x191 (ISO 06 B)	752602	1
44	Chain joint 3/8 in	752603	1
46	Nut DIN 934 M16	131450	1
47	Sprocket left (picture 3)		1
48	Tension spring	752410	1

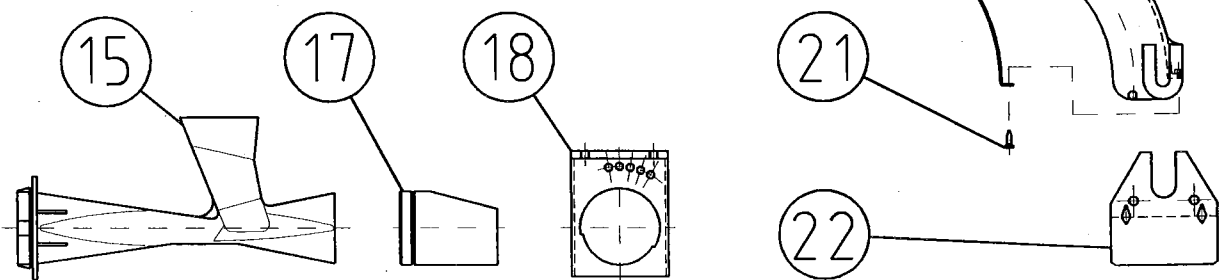
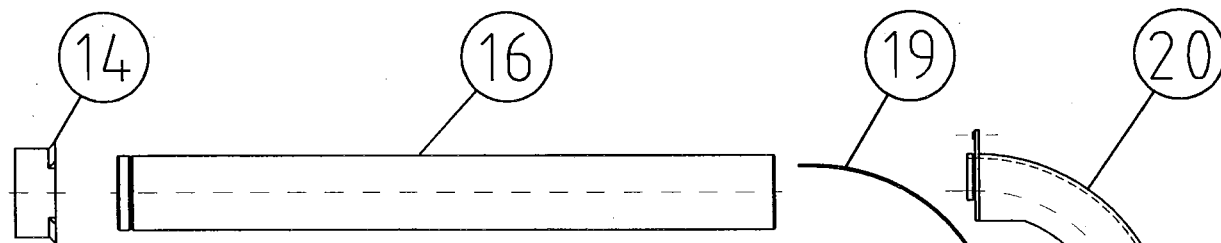
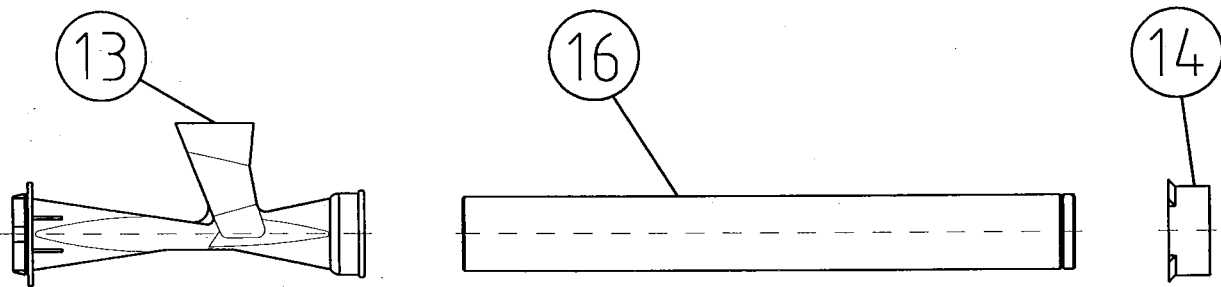
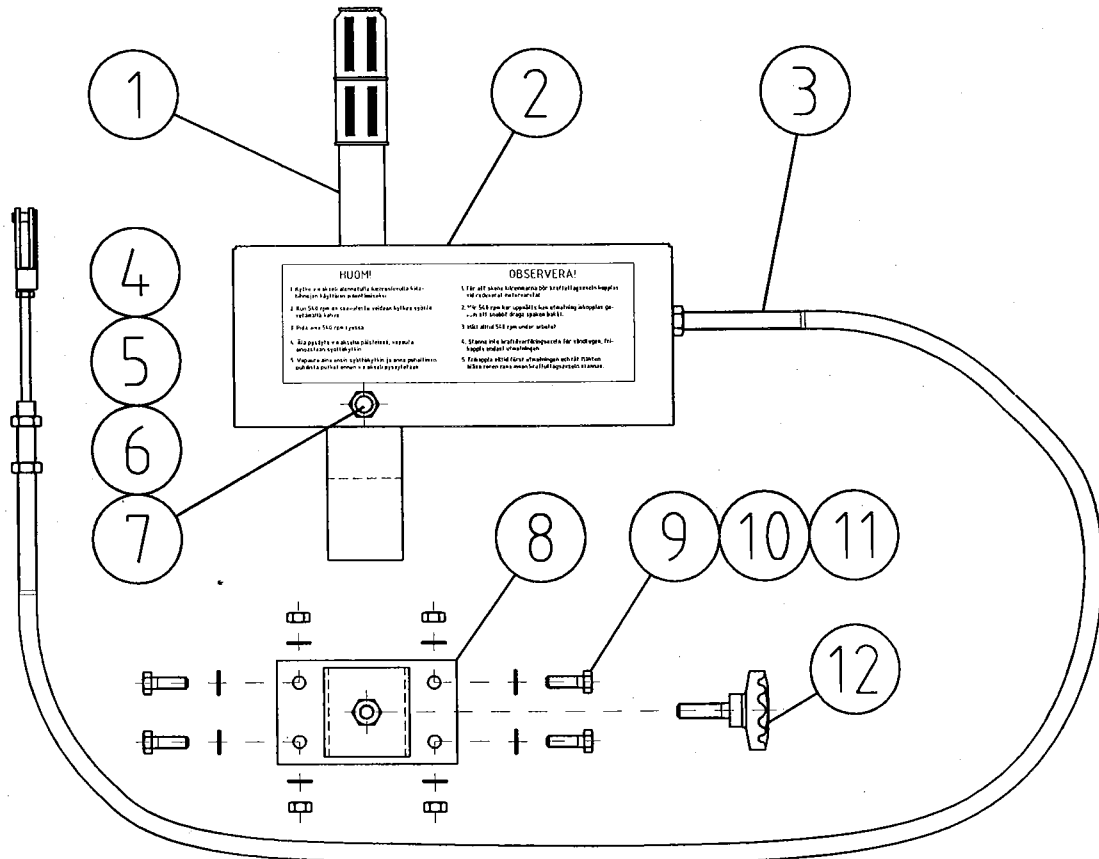
2



Item	Description	Part no	Pcs
1	Cover	753130	2
2	Split pin 3x16	132732	2
3	Split nut M10	133205	2
4	Washer M10x30	131930	2
5	Feed adj. hand wheel	753120	2
6	Screw M8x25	130740	4
7	Securing lever	753080	2
8	Collar nut	753140	2
9	Bracket right	751180	1
10	Bracket left	751181	1
11	Spring	753090	2
12	Lock nut M8	131570	4
13	Washer	753100	
14	Sleeve	753060	2
15	Feed shaft right	752280	1
16	Feed shaft left	752281	1
17	Shaft for bottom flaps right	753070	1
18	Shaft for bottom flaps left	753071	1
19	Endplate	753050	28
20	Washer	753170	28
21	Washer	753010	14
22	Shutter	753030	14
23	Lock nut M5 (stainless)	133010	28
24	Screw M5x80 (stainless)	133110	28
25	Bottom	753020	14
26	Tightening pin 6x40 (stainless)	133195	14
27	Rotating washer	753011	14
28	Screw 2,9x9,5 (stainless)	133040	84
29	Distance roller (black)	753160	14
30	Bottom flap	753040	14
31	Cover	753021	14
32	Feed roller (grey)	753150	14
33	Feed camber complete. right	753500	
34	Feed camber complete. left	753501	

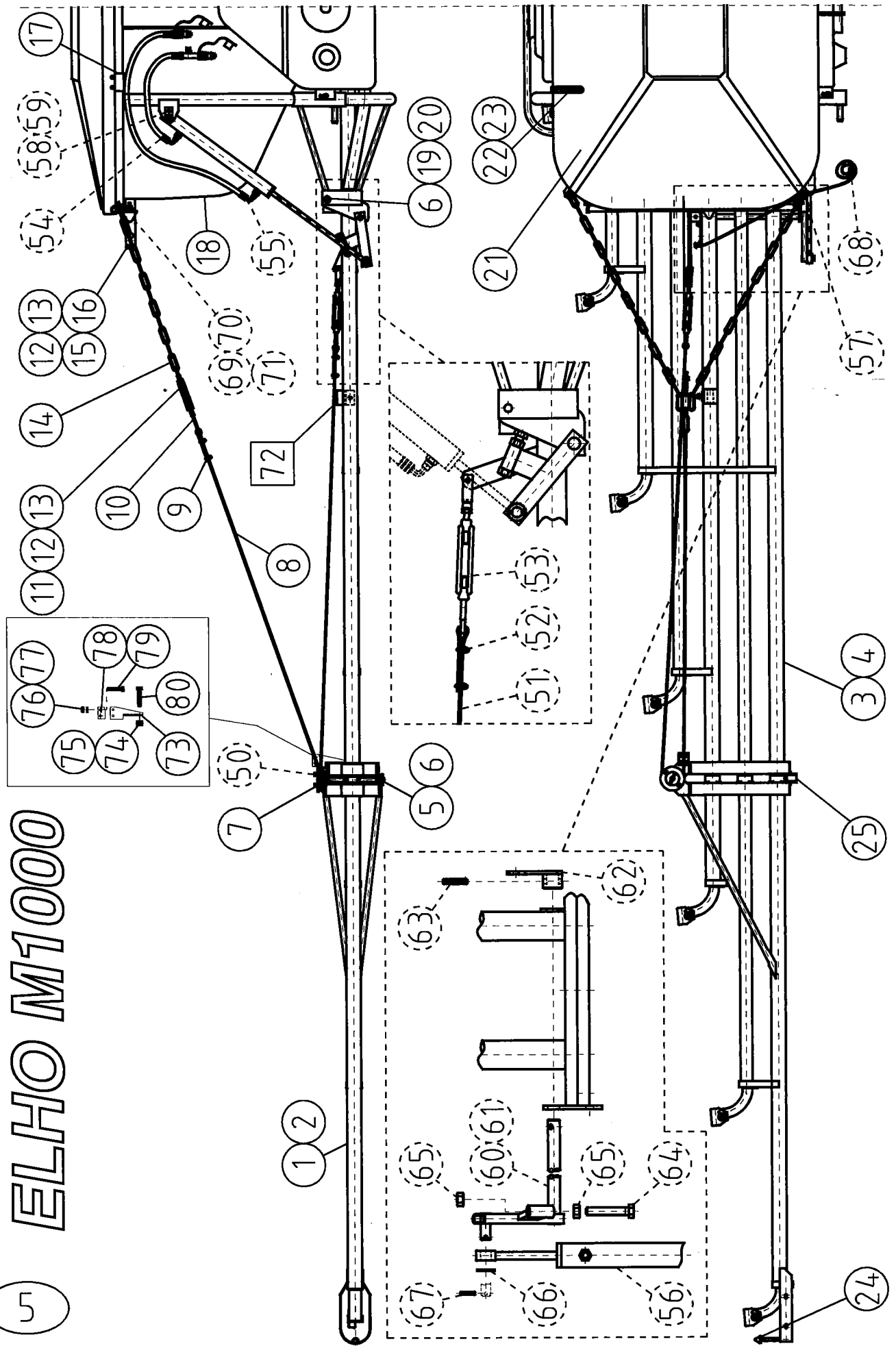


Item	Description	Part no	Pcs
1	Blower wheel	752010	1
2	Key DIN 6885A 8x7x30	132950	1
3	Blower shaft	752180	1
4	V-belt SPZ 1437	752330	3
5	Washer DIN 9021 M10	131930	1
6	Washer DIN 125A M8/8,4	131750	1
7	Screw DIN 933 M8x25	130740	1
8	Bearing PF 25 FM SKF	752325	1
9	Bearing GRRA 25 INA	752320	1
10	Small pulley	752020	1
11	Screw DIN 914 M5x8	132501	2
12	Spring pin DIN 1481 6x60	132812	1
13	Spring pin DIN 1481 10x60	132870	1
14	Drive shaft welded	752090	1
15	Big pulley	752030	1
16	Washer	752290	1
17	Ball bearing 6007 RS	848000	4
18	Locking ring DIN 471 35x1,5	132100	3
19	Housing	752100	1
20	Housing right	752080	1
21	Housing left	752081	1
22	Locking ring DIN 472 62x2	132158	2
23	Sprocket right	752040	1
24	Sprocket left	752041	1
25	Key stainless 6x6x30	132945	4
26	Clutch right	752050	1
27	Clutch left	752051	1



Item	Description	Part no	Pcs
1	Remote control handle	752220	1
2	Handle frame	750220	1
3	Remote control cable	750300	1
4	Screw DIN 933 M10x35	130900	1
5	Rubber sleeve Ø 10/20		1
6	Washer DIN 125A M10/10,5	131770	1
7	Lock nut DIN 985 M10	131580	1
8	Remote control bracket	750120	1
9	Screw DIN 933 M8x25	130740	4
10	Washer DIN 125A M8/8,4	131750	8
11	Lock nut DIN 985 M8	131570	4
12	Handle M10	752601	1
13	Funnel	750190	12
14	Sleeve	754080	18
15	Inner tube funnel	750191	2
16	Tube		
	L = 2406	754510	6
	L = 2130	754520	2
	L = 2020	754530	2
	L = 1290	754540	2
	L = 1178	754550	2
	L = 450	754560	2
	L = 410	754570	12
	L = 338	754580	2
17	Inner tube L = 75	754500	2
18	Bracket for inner outlet right	754190	1
	Bracket for inner outlet left	744191	1
19	Outlet lining	754180	14
20	Outlet	754160	14
21	Screw	133040	14
22	Deflection plate	754130	12
23	Deflection plate left	754435	1
24	Deflection plate right	754430	1

5 ELHO M1000



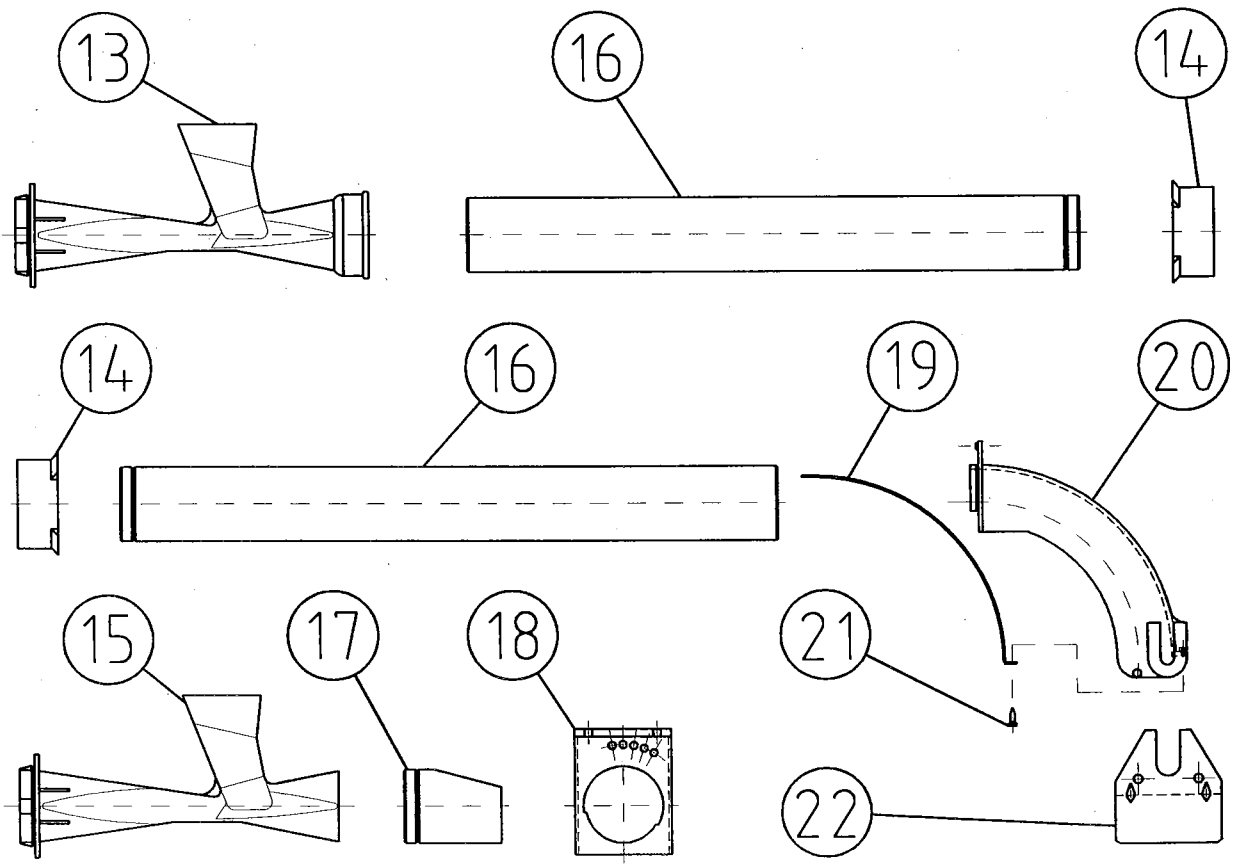
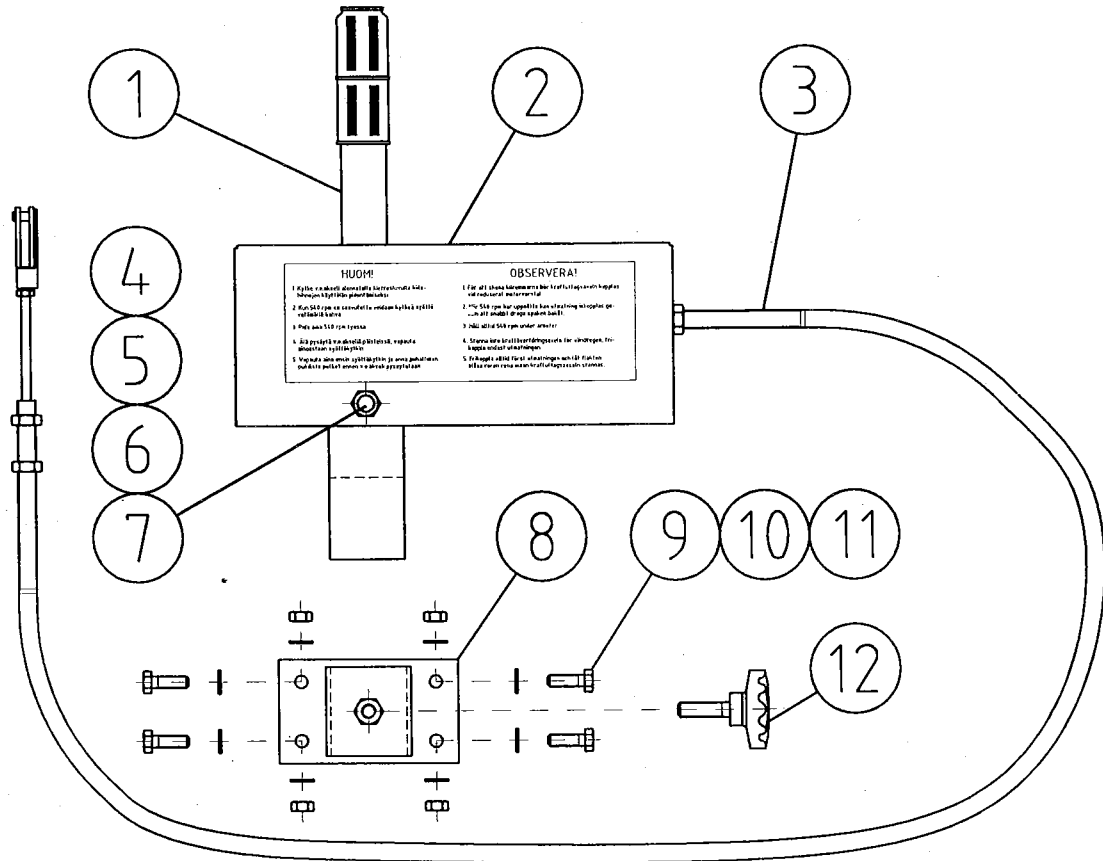
Hydraulic boom lifter

Item	Description	Part no	Pcs
50	Screw DIN 933 M8x20	130720	2
51	Wire	757506	2
52	Wire clamps DIN 741 5 mm	133300	4
53	Wire adjuster	757505	2
54	Hydraulic house (with adjustable resistor)	145020	2
55	Hydraulic house	145010	2
56	Cylinder	757575	2
	Seal kit	757576	2
57	Release rope eye	757523	2
58	Pin	757502	2
59	Screw DIN 933 M6x16	130620	2
60	Lift shaft right	757540	1
61	Lift shaft left	757541	1
62	Bend arm	757530	2
63	Tightening pin DIN 1481 10x40	132855	2
64	Screw DIN 933 M16x90	131235	2
65	Nut DIN 934 M16	131493	4
66	Washer DIN 125A M20/21	131830	2
67	Spring pin DIN 1481 6x30	132823	2
68	Release rope	757508	2
69	Rubber damper \varnothing 60	754630	2
70	Washer DIN 125A M10/10,5	131770	10
71	Lock nut DIN 985 M10	131590	2

Item	Description	Part no	Pcs
1	Outer boom right	750502	1
2	Outer boom left	750503	1
3	Inner boom right	750500	1
4	Inner boom left	750501	1
5	Shaft 16x266	754200	2
6	Spring pin DIN 1481 6x30	132823	4
7	Screw DIN 933 M8x20	130720	2
8	Boom wire	754600	2
9	Wire clamps DIN 741 5 mm	133300	4
10	Treaded bar	751350	2
11	Boom spring	754610	2
12	Lock nut DIN 985 M12	131600	4
13	Washer DIN 125A M12/13	131790	4
14	Chain welded	751340	2
15	Hasp	757535	2
16	Spring	754640	2
17	Cover plate	750185	2
18	Fertiliser hopper	750019	1
19	Washer DIN 125A M16/17	131810	2
20	Pin	754260	2
21	Hopper cover	750181	1
22	Rubber band for cover 923	750187	2
23	Knob for rubber band 931	750188	2
24	Rubber damper \varnothing 25	754620	2
25	Rubber damper \varnothing 40	754630	2
73	Wire guide bracket	750570	2
74	Nut M10 DIN 985	131580	2
75	Washer M10 DIN 125 A	131780	2
76	Nut M8 DIN 985	131570	2
77	Washer M8 DIN 125 A	131760	2
78	Wire guide	750572	2
79	Bolt M8x60 DIN 931	130040	2
80	Bolt M10x70 DIN 931	130180	2

Item	Description	Part no	Pcs
1	Outer boom right*	750602	1
2	Outer boom left*	750603	1
3	Inner boom right*	750600	1
4	Inner boom left*	750601	1
5	Shaft 16x266	754200	2
6	Spring pin DIN 1481 6x30	132823	4
7	Screw DIN 933 M8x20	130720	2
8	Boom wire	754600	2
9	Wire clamps DIN 741 5 mm	133300	4
10	Treaded bar	751350	2
11	Boom spring	754610	2
12	Lock nut DIN 985 M12	131600	4
13	Washer DIN 125A M12/13	131790	4
14	Chain welded	751340	2
15	Hasp	757535	2
16	Spring	754640	2
17	Cover plate	750185	2
18	Fertiliser hopper	750019	1
19	Washer DIN 125A M16/17	131810	2
20	Pin	754260	2
21	Hopper cover	750181	1
22	Rubber band for cover 923	750187	2
23	Knob for rubber band 931	750188	2
24	Rubber damper ø 25	754620	2
25	Rubber damper ø 40	754630	2
73	Wire guide bracket	750570	2
74	Nut M10 DIN 985	131580	2
75	Washer M10 DIN 125 A	131780	2
76	Nut M8 DIN 985	131570	2
77	Washer M8 DIN 125 A	131760	2
78	Wire guide	750572	2
79	Bolt M8x60 DIN 931	130040	2
80	Bolt M10x70 DIN 931	130180	2

* Special version



Item	Description	Part no	Pcs
1	Remote control handle	752220	1
2	Handle frame	750220	1
3	Remote control cable	750300	1
4	Screw DIN 933 M10x35	130900	1
5	Rubber sleeve Ø 10/20		1
6	Washer DIN 125A M10/10,5	131770	1
7	Lock nut DIN 985 M10	131580	1
8	Remote control bracket	750120	1
9	Screw DIN 933 M8x25	130740	4
10	Washer DIN 125A M8/8,4	131750	8
11	Lock nut DIN 985 M8	131570	4
12	Handle M10	752601	1
13	Funnel	750190	12
14	Sleeve	754080	18
15	Inner tube funnel	750191	2
16	Tube		
	L = 2116*	754710	6
	L = 1850*	754720	2
	L = 849*	754730	2
	L = 1728*	754740	2
	L = 1226*	754750	2
	L = 228*	754760	2
	L = 410	754570	12
	L = 338	754580	2
17	Inner tube L = 75	754500	2
18	Bracket for inner outlet right	754190	1
	Bracket for inner outlet left	744191	1
19	Outlet lining	754180	14
20	Outlet	754160	14
21	Screw	133040	14
22	Deflection plate	754130	12
23	Deflection plate left	754435	1
24	Deflection plate right	754430	1

* Special version

21.2.2002

ELHO

Spare Parts/ Ersatzteile/ Reservdelar/ Varaosat

Matic 1000 Row speed boom

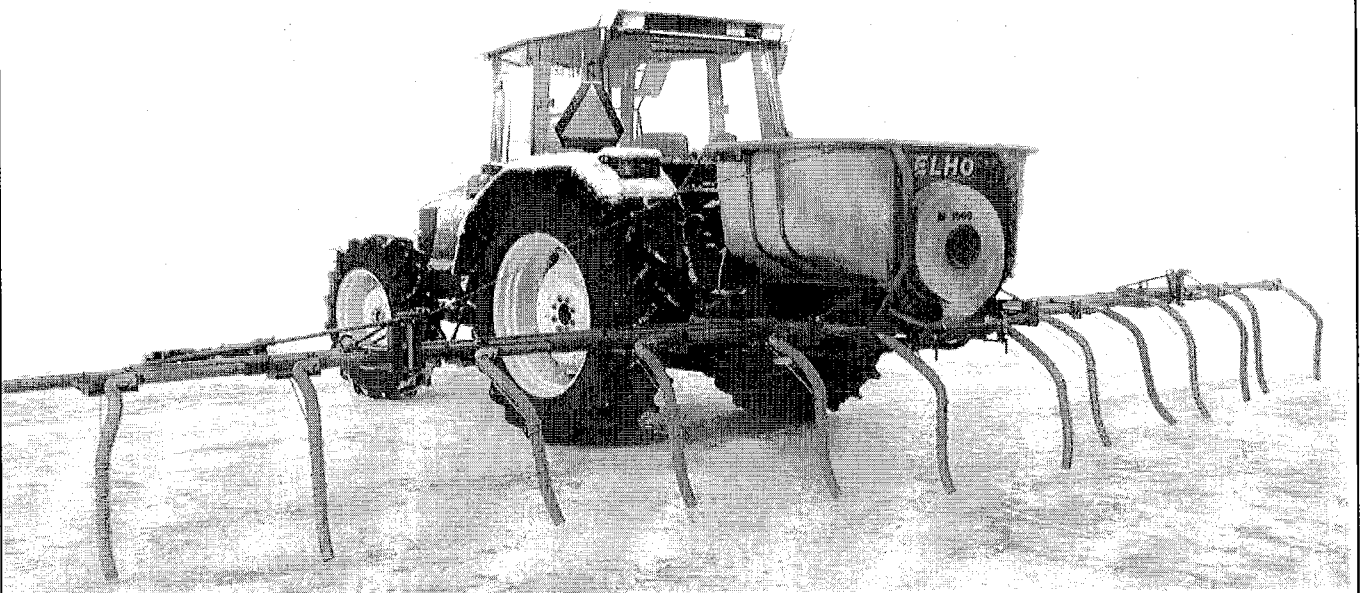


Fig 1						
Pos	Name	Nahme	Benämning	Nimike	No	Pcs
1	Tube 1		Gödselrör 1	Lannoiteputki 1	Ø 50 L=1985	758742 3
2	Adaptertube 1		Adapterrör 1	Liitosputki 1	Ø 50 L=988+20	758775 1
3	Tube 2		Gödselrör 2	Lannoiteputki 2	Ø 50 L=810	758744 1
4	Tube 3		Gödselrör 3	Lannoiteputki 3	Ø 50 L=133	758746 1
5	Inner boom Right		Innerbom höger	Sisäpuomi oikea		758600 1
6	Extensiontube 1		Skarvrör 1	Jatkoputki 1	Ø63x3 L=320	758780 1
7	Innertube 1		Teleskoprör 1	Säätöputki 1	Ø 50 L=310+20	758795 1
8	Clamp		Klämmarplåt	Pidike		758750 2
9	Screw	Schraube	6-k Skruv hg	Kuusioruuvi	DIN 933 8.8 M6X35 ZN	130680 2
10	Washer	Scheibe	Bricka	Aluslaatta	DIN 125A M8/8.4 ZN	131750 10
11	Nut	Muttern	Låsmutter	Lukitusmutteri	DIN 985-8 M8 ZN	131570 12
12	Screw	Schraube	Plåtskruv	Uralevyruuvi	DIN 7981 C 4,8X16 A2 PH	133070 11
13	Wire guide		Glidklack	Ohjainmuovi		750572 1
14	Mounting clamp		Skarv klämma	Jatke		758710 3
15	Outlet		Spridarkrök	Suutin	Ø51x1.2-90° HST 316 L	758740 3
16	Screw	Schraube	6-k Skruv hg	Kuusioruuvi	DIN 933 8.8 M8X20 ZN	130720 8
17	Spreading plate		Spridarplåt	Hajoituslevy		758730 3
18	Hose clamp	Schlauchscellen	Slangklämmare	Letkuside	Norma T 9mm W3-60-80	147154 6
19	PVC-hose	PVC-Schlauch	PVC-slang	PVC-letku	PVC UL 94 V2 L=900	758791 3
20	Clamp		Fjäderklämma	Pidike		758715 3
21	Adjustplate 1 Right		Ställplatta 1 höger	Säätölatta 1 oikea		758760 1
22	Screw	Schraube	6-k Skruv dg	Kuusioruuvi	DIN 931 8.8 M 8X60 ZN	130030 2
23	Rubber bumper		Gummistropp	Kumipuskuri	Ø 40	754630 1
24	Screw	Schraube	Spårskruv, sänkt	URARUUVI UPPOK	DIN 963 4.8 M6X30 ZN	132495 1
25	Spring	Feder	Hållarfjäder	Pidike jousi		758700 3

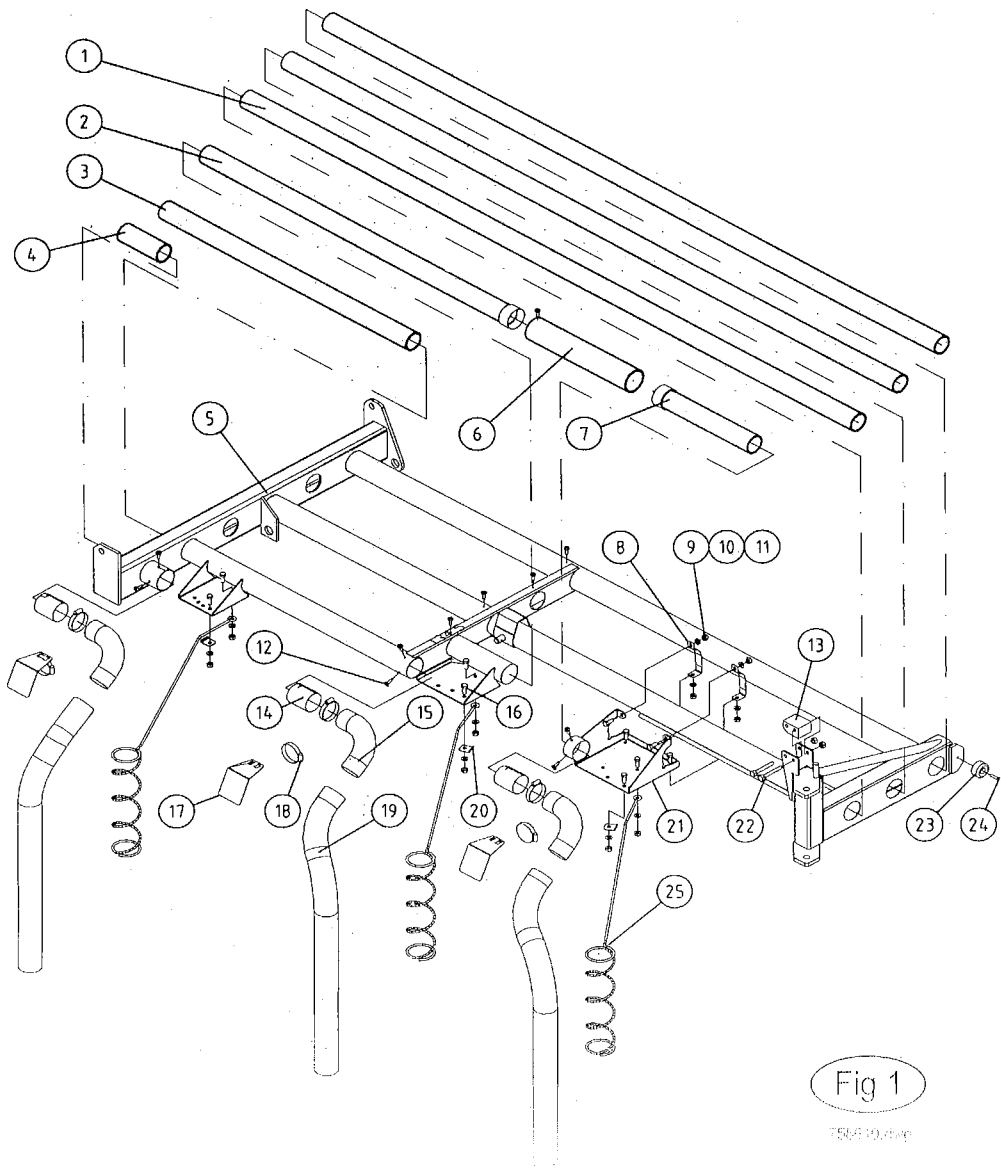


Fig 1
750410/01

Fig 2	Pos	Name	Nahme	Benämning	Nimike	No	Pcs
	1	Tube 1		Gödselrör 1	Lannoiteputki 1	Ø 50 L=1985	758742 3
	2	Innertube 1		Teleskoprör 1	Säätöputki 1	Ø 50 L=310+20	758795 1
	3	Extensiontube 1		Skarvrör 1	Jatkoputki 1	Ø63x3 L=320	758780 1
	4	Screw	Schraube	6-k Skruv dg	Kuusioruuvi	DIN 931 8.8 M 8X60 ZN	130030 2
	5	Nut	Muttern	Låsmutter	Lukitusmutteri	DIN 985-8 M8 ZN	131570 12
	6	Wire guide		Glidklack	Ohjainmuovi		750572 1
	7	Screw	Schraube	Spårskruv, sänkt	Uraruuvi	DIN 963 4.8 M6X30 ZN	132495 1
	8	Rubber bumper		Gummistropp	Kumipuskuri	Ø 40	754630 1
	9	Clamp		Klämmarplåt	pidike		758750 2
	10	Screw	Schraube	6-k Skruv hg	Kuusioruuvi	DIN 933 8.8 M6X35 ZN	130680 2
	11	Washer	Scheibe	Bricka	Aluslaatta	DIN 125A M8/8.4 ZN	131750 10
	12	Tube 2		Gödselrör 2	Lannoiteputki 2	Ø 50 L=810	758744 1
	13	Tube 3		Gödselrör 3	Lannoiteputki 3	Ø 50 L=133	758746 1
	14	Adaptertube 1		Adapterrör 1	Liitosputki 1	Ø 50 L=988+20	758775 1
	15	PVC-hose	PVC-Schlauch	PVC-slang	PVC-letku	PVC UL 94 V2 L=900	758791 3
	16	Outlet		Spridarcrök	Suutin	Ø51x1.2-90° HST 316 L	758740 3
	17	Hose clamp	Schlauchscellen	Slangklämmare	Letkuside	Norma T 9mm W3-60-80	147154 6
	18	Mounting clamp		Skarv klämma	Jatke		758710 3
	19	Spreading plate		Spridarplåt	Hajoituslevy		758730 3
	20	Spring	Feder	Hållarfjäder	Pidike jousi		758700 3
	21	Clamp		Fjäderklämma	Pidike jousi		758715 3
	22	Adjustplate 1 Left		Ställplatta 1 vänster	Säätölaatta 1 vasen		758761 1
	23	Screw	Schraube	6-k Skruv hg	Kuusioruuvi	DIN 933 8.8 M8X20 ZN	130720 8
	24	Screw	Schraube	Plåtskruv	Uravevyruuvi	DIN 7981 C 4,8X16 A2 PH	133070 11
	25	Inner boom Left		Innerbom vänster	Sisäpuomi vasen		758601 1

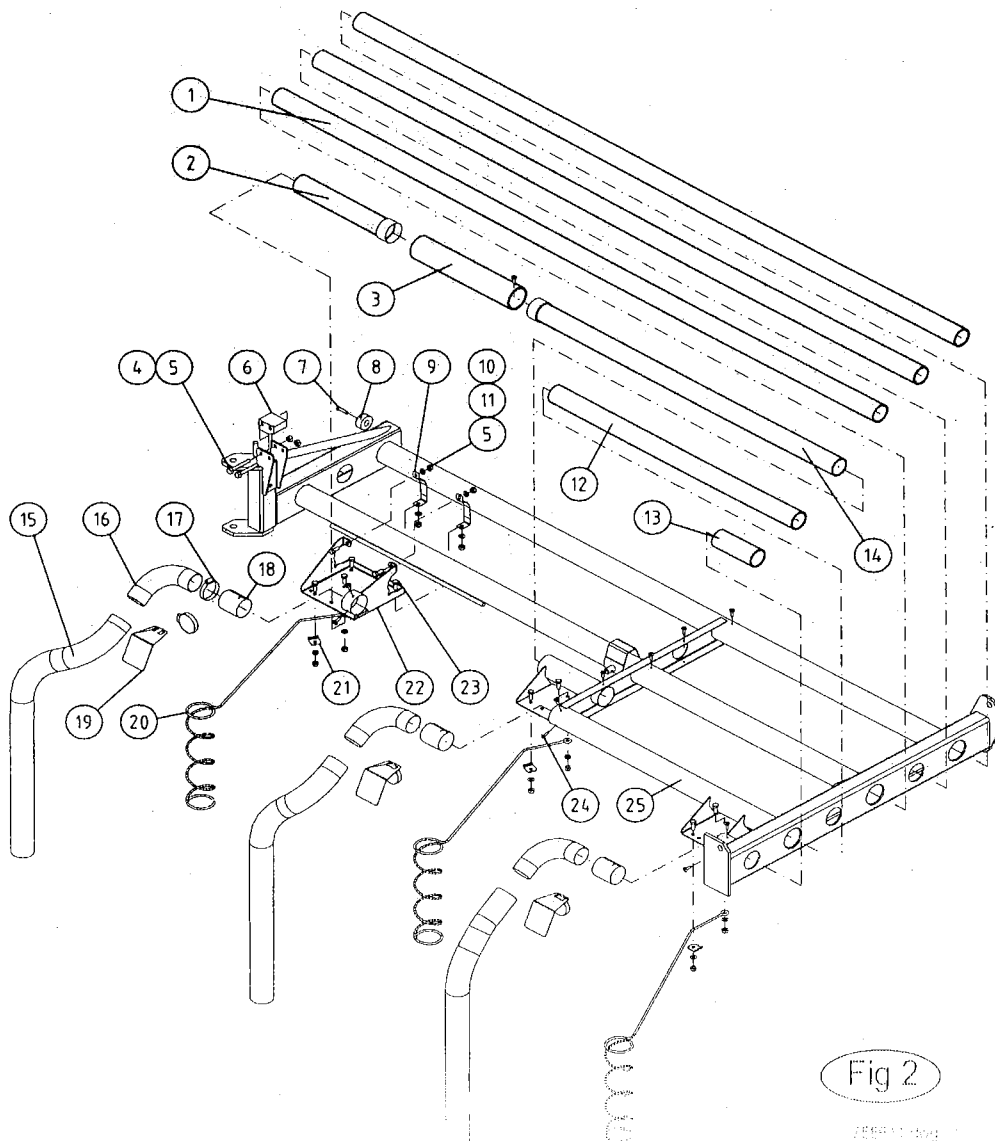


Fig 3						
Pos	Name	Nahme	Benämning	Nimike	No	Pcs
1	Spreading plate		Spridarplåt	Hajoituslevy		758730 3
2	Hose clamp	Schlauchscellen	Slangklämmare	Letkuside	Norma T 9mm W3-60-80	147154 6
3	Outlet		Spridarkrök	Suutin	Ø51x1.2-90° HST 316 L	758740 3
4	Mounting clamp		Skarv klämna	Jatke		758710 3
5	Adjustplate 2 Left		Ställplatta 2 vänster	Säätölaatta 2 vasen		758771 3
6	Clamp		Klämmarplåt	Pidike		758750 6
7	Screw	Schraube	6-k Skruv hg	Kuusioruuvi	DIN 933 8.8 M6X35 ZN	130680 6
8	Washer	Scheibe	Bricka	Aluslaatta	DIN 125A M8/8.4 ZN	131750 18
9	Nut	Muttern	Låsmutter	Lukitusmutteri	DIN 985-8 M8 ZN	131570 18
10	Innertube 3		Teleskoprör 3	Säätöputki 3	Ø 50 L=520+20	758797 1
11	Extensiontubr 3		Skarvrör 3	Jatkoputki 3	Ø63x3 L=980	758784 1
12	PVC-hose	PVC-Schlauch	PVC-slang	PVC-letku	PVC UL 94 V2 L=900	758791 3
13	Spring	Feder	Hållarfjäder	Pidike jousi		758700 3
14	Clamp		Fjäderklämna	Pidike		758715 3
15	Screw	Schraube	Plåtskruv	Uravevyruuvi	DIN 7981 C 4,8X16 A2 PH	133070 8
16	Screw	Schraube	6-k Skruv hg	Kuusioruuvi	DIN 933 8.8 M8X20 ZN	130720 16
17	Innertube 2		Teleskoprör 2	Säätöputki 2	Ø 50 L=520+20	758796 1
18	Extensiontube 2		Skarvrör 2	Jatkoputki 2	Ø63x3 L=540	758782 1
19	Outer boom Left		Ytterbom vänster	Ulkopuomi vasen		758605 1
20	Shaft		Lodrat axel	Pysty tappi	Ø 16x266	754200 1
21	Spring pin	Spannhülisen	Rörsprint	Jousisokka	DIN 1481 6x30 ZN	132823 2
22	Spacer		Distans	Väliholkki	Ø57x3.5 L=30	758788 2
23	Adaptertube 3		Adapterrör 3	Liitosputki 3	Ø 50 L=335+20	758777 3
24	Adaptertube 2		Adapterrör 2	Liitosputki 2	Ø 50 L=100+20	758776 1

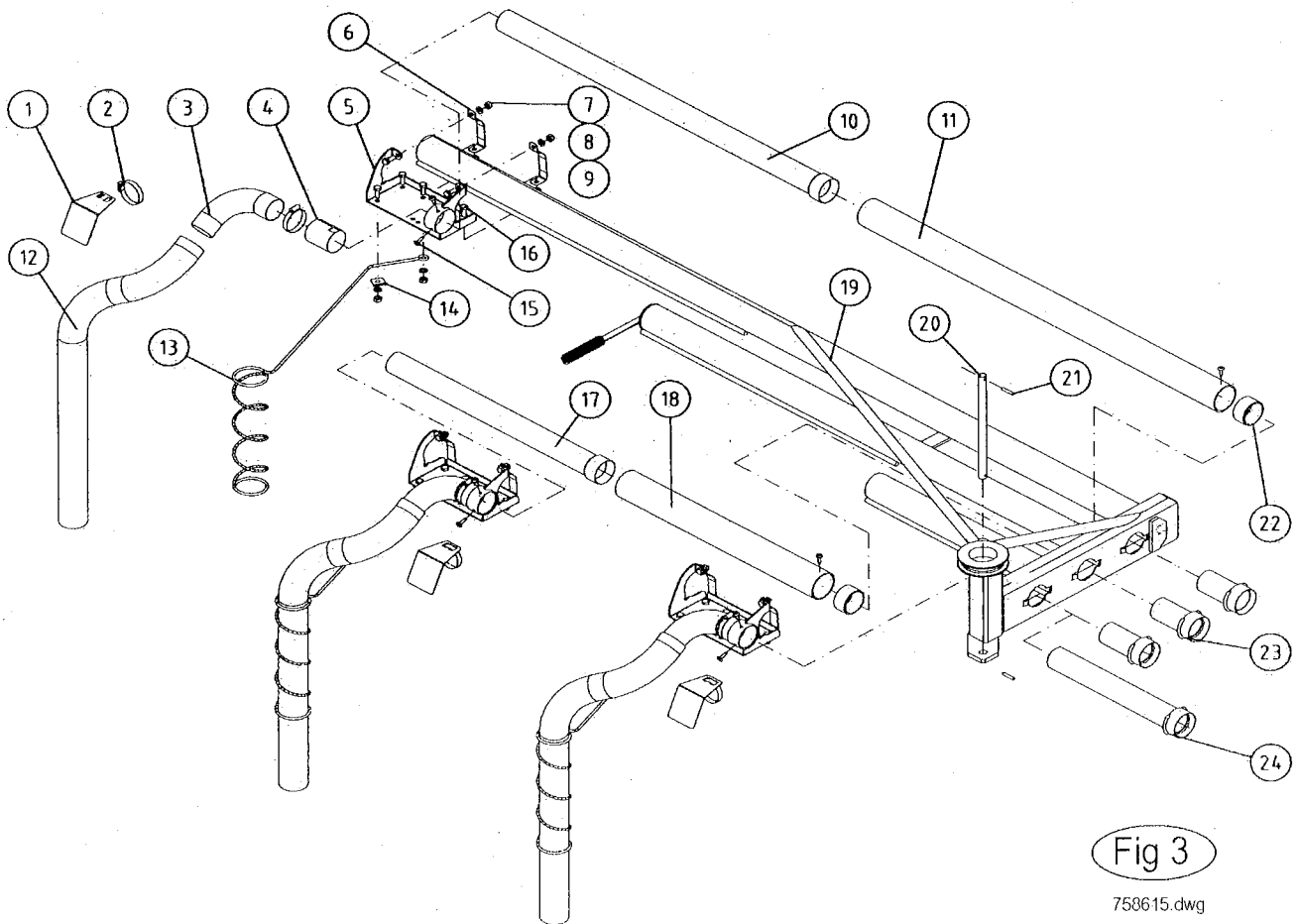


Fig 4

Pos	Name	Nahme	Benämning	Nimike	No	Pcs
1	Adaptertube 2		Adapterrör 2	Liitosputki 2	Ø 50 L=100+20	758776 1
2	Adaptertube 3		Adapterrör 3	Liitosputki 3	Ø 50 L=335+20	758777 3
3	Outer boom Right		Ytterbom höger	Ulkopuomi oikea		758606 1
4	Shaft		Lodrat axel	Pystytappi	Ø 16x266	754200 1
5	Spring pin	Spannhülsen	Rörsprint	Jousisokka	DIN 1481 6x30 ZN	132823 2
6	Spacer		Distans	Väliholkki	Ø57x3.5 L=30	758788 2
7	Extensiontubr 3		Skarvrör 3	Jatkoputki 3	Ø63x3 L=980	758784 1
8	Innertube 3		Teleskoprör 3	Säätöputki 3	Ø 50 L=520+20	758797 1
9	Clamp		Klämmarplåt	Pidike		758750 6
10	Screw	Schraube	6-k Skruv hg	Kuusioruuvi	DIN 933 8.8 M6X35 ZN	130680 6
11	Washer	Scheibe	Bricka	Aluslaatta	DIN 125A M8/8.4 ZN	131750 18
12	Nut	Muttern	Låsmutter	Lukitusmutteri	DIN 985-8 M8 ZN	131570 18
13	Extensiontube 2		Skarvrör 2	Jatkoputki 2	Ø63x3 L=540	758782 1
14	Innertube 2		Teleskoprör 2	Säätöputki 2	Ø 50 L=520+20	758796 1
15	Mounting clamp		Skarv klämna	Jatke		758710 3
16	Screw	Schraube	Plåtskruv	Uralevyruuvi	DIN 7981 C 4,8X16 A2 PH	133070 8
17	Hose clamp	Schlauchscellen	Slangklämmare	Letkuside	Norma T 9mm W3-60-80	147154 6
18	Outlet		Spridarcrök	Suutin	Ø51x1.2-90° HST 316 L	758740 3
19	PVC-hose	PVC-Schlauch	PVC-slang	PVC-letku	PVC UL 94 V2 L=900	758791 3
20	Spreading plate		Spridarplåt	Hajoituslevy		758730 3
21	Screw	Schraube	6-k Skruv hg	Kuusioruuvi	DIN 933 8.8 M8X20 ZN	130720 16
22	Adjustplate 2 Right		Ställplatta 2 höger	Säätölaatta 2 oikea		758770 3
23	Clamp		Fjäderklämna	Pidike		758715 3
24	Spring	Feder	Hållarfjäder	Pidike jousi		758700 3

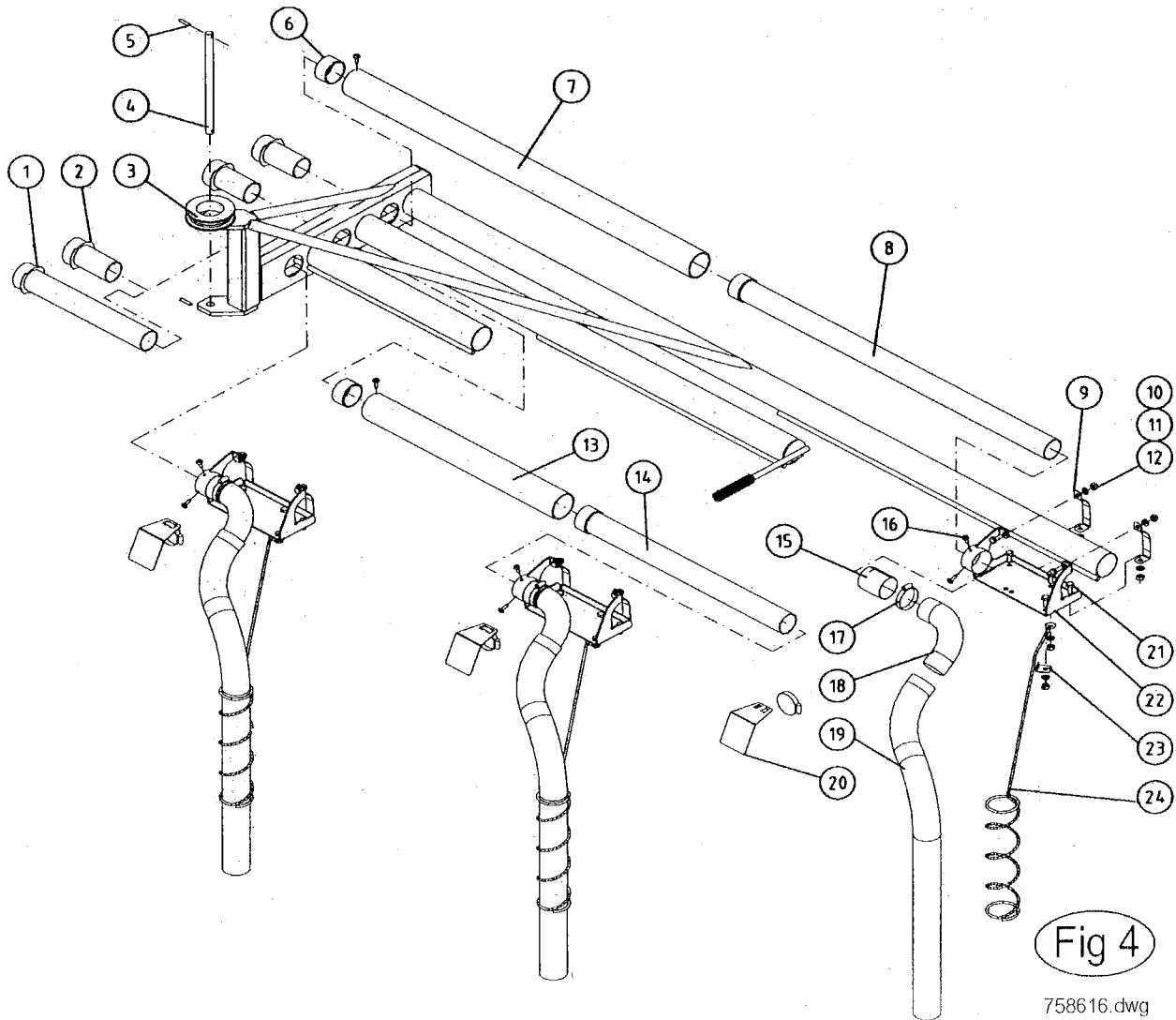
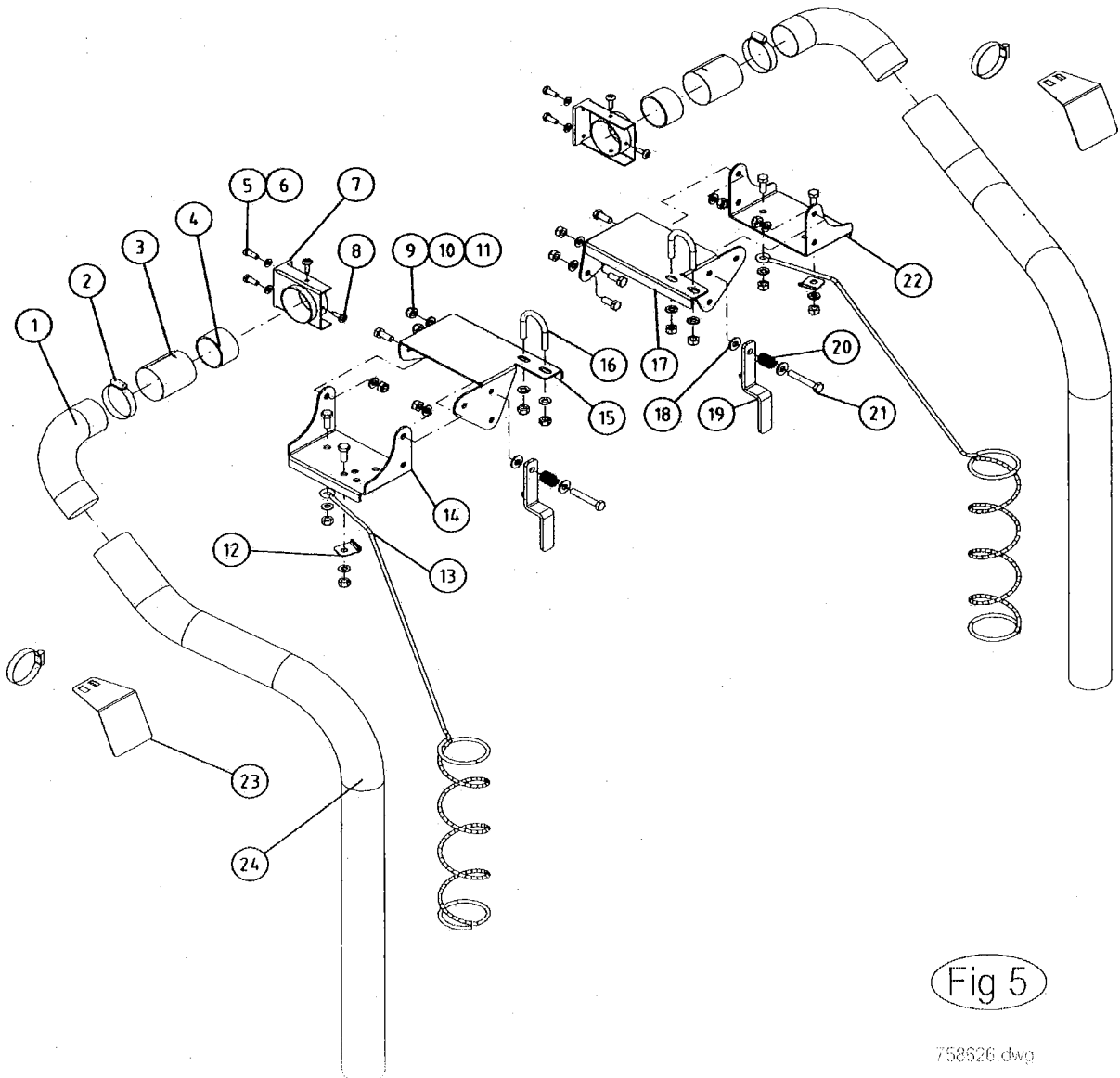


Fig 4

758616.dwg

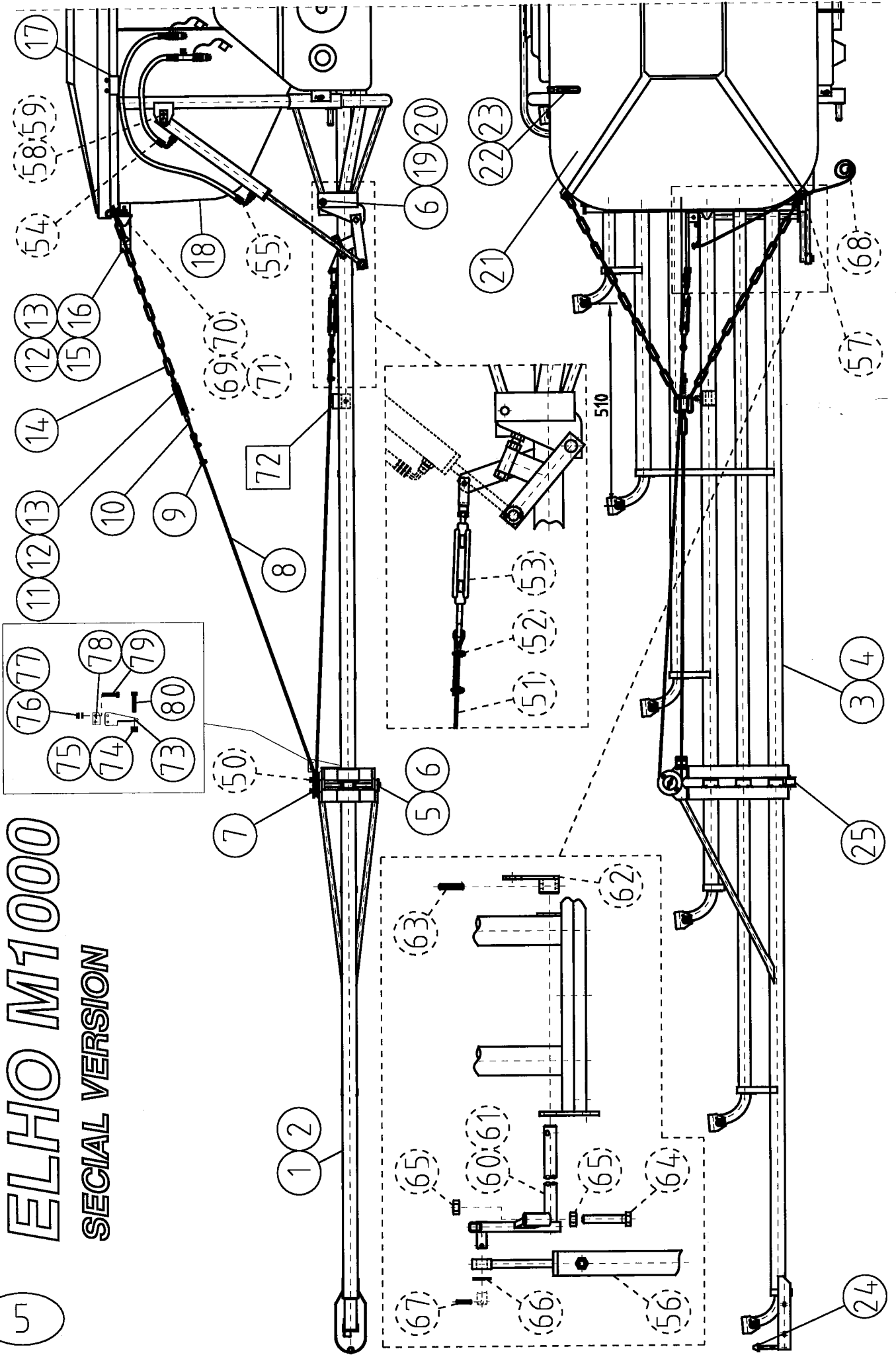
Fig 5						
Pos	Name	Nahme	Benämning	Nimike	No.	Pcs
1	Outlet		Spridarkrök	Suutin	Ø51x1.2-90° HST 316 L	758740 2
2	Hose clamp	Schlauchscellen	Slangklämmare	Letkuside	Norma T 9mm W3-60-80	147154 4
3	Mounting clamp		Skarv klämma	Jatke		758710 2
4	Spacer		Distans	Väliholkki	Ø50x2,4 L=30	758789 2
5	Screw	Schraube	6-k Skruv hg	Kuusioruuvi	DIN 933 8.8 M6X20 ZN	130640 4
6	Washer	Scheibe	Bricka	Aluslaatta	DIN 125A M 6/6.4 ZN	131730 4
7	Spred bracket		Spridarfäste	Suuttimen pidike		758800 2
8	Screw	Schraube	Plåtskruv	Uraruuvi	DIN 7981 C 4,8X16 A2 PH	133070 4
9	Screw	Schraube	6-k Skruv hg	Kuusioruuvi	DIN 933 8.8 M8X20 ZN	130720 10
10	Washer	Scheibe	Bricka	Aluslaatta	DIN 125A M8/8.4 ZN	131750 16
11	Nut	Muttern	Låsmutter	Lukitusmutteri	DIN 985-8 M8 ZN	131570 16
12	Clamp		Fjäderklämma	Pidike		758715 2
13	Spring	Feder	Hållarfjäder	Pidike jousi		758700 2
14	Bracket Left		Konsol vänster	Tuki vasen		758811 1
15	Adjustplate 3 Left		Ställplatta 3 vänster	Säätölaatta 3 vasen		758821 1
16	U-bolt		Bygel	U-pidike	36 mm	758830 2
17	Bracket Right		Konsol höger	Tuki oikea		758810 1
18	Washer	Scheibe	Karosseribricka	Korialislevy	DIN 9021 M8 ZNC	131920 4
19	Griff		Handtag	Kahva		758872 2
20	Spring	Feder	Tryckfjäder	Painejousi		533200 2
21	Screw	Schraube	6-k Skruv dg	Kuusioruuvi	DIN 931 8.8 M 8X50 ZN	130010 2
22	Adjustplate 3 Right		Ställplatta 3 höger	Säätölaatta 3 oikea		758820 1
23	Spreading plate		Spridarplåt	Hajoutuslevy		758730 2
24	PVC-hose	PVC-Schlauch	PVC-slang	PVC-letku	PVC UL 94 V2 L=1000	758790 2



5

ELHO M1000

SPECIAL VERSION



ELHO Matic 1000

Mounting instruction for hydraulic boom lifters.

1. The boom lift shaft 60 (61) is mounted through the holes in the innerboom close to the machine according to the fig. Please note difference between right and left shaft. Mount the bendarm 62 to the end of the shaft using springpin 63 (10x40).
2. The cylinder is mounted with the pistonrod to the lift shaft. Use the washer 66 (M20) and the spring pin 67 (6x30). Both cylinders are extended before mounting the upper end with pin 58. Secure the pin with the screw 59 (M6x16).
3. Mount the fork of the wire adjuster 53 to the bendarm 62. The wire 51 for the external boom is mounted to the pulley by the screw 50 (M8x20). The other end leave the pulley on the rear side and is mounted to the wire adjuster 53 by the wire clamps 52.
4. The wire shall be almost straight, but not under tension with the cylinder extended and the external boom in working position.
5. The boomholders 15 are changed to longer ones, and the release rope is tied to their end. This new boom holders keeps the boom slightly incleaned in transport position, which makes unfolding more easy.
6. The release rope is tread through the eye 57, which has to be mounted to the chainbracket and further into the tractor cabine.
7. The rubber dampers 69 are mounted according to the figure. By use of the washers 70 (M10) the position of the damper can be adjusted to match with length of the boomholder 15.
8. The hydraulic hose 54 (with adjustable restrictor) is mounted to the upper cylinder port and the hose 55 to the lower one. The hydraulic hoses are connected to the double acting outlets of the tractor.

USE OF THE HYDRAULIC BOOM LIFTERS.

The speed of the hydraulic boom lifters can be adjusted by the restrictor close to the quick release coupling. Use as low hydraulic flow as possible (tractor engine idling).

In the first stage of the lifting, the external booms are folded to the rear and after this the complete boom starts to rise. Ensure that the spring loaded boom holders latch in their position before transport.

Before lowering the booms, take possible slack out of the cylinders to avoid the booms from falling free, and release the boomholders with the rope. Do keep slow speed on the movements, and ensure that the cylinder is fully extended before work.

NOTE! Ensure nobody is in the area of danger before use of the boom lifters!